



3-PIECE MOUNTING PAD FULL PORT BALL VALVE

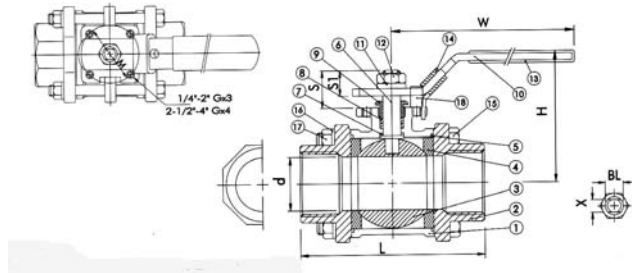
1000 PSI (69 bar) WOG

Mounting flanged for ISO standard 5211

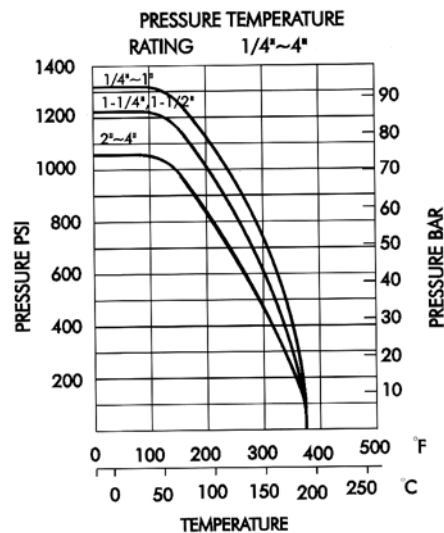
Size: 1/4" to 4"

Type 11320, with pipe thread, stainless steel AISI 316 (DIN 1.4408)

Type 11330, with but weld ends



ITEM	PARTS	QTY	MATERIALS
1.	BODY	1	ASTM-A351-CF8M
2.	CAP	2	ASTM-A351-CF8M
3.	BALL	1	ASTM-A351-CF8M
4.	BALL SEAT	2	15% R-PTFE
5.	JOINT GASKET	2	15% R-PTFE
6.	STEM	1	AISI 316
7.	THRUST WASHER	1	PTFE
8.	STEM PACKING	2	PTFE
9.	GLAND NUT	1	AISI 304
10.	HANDLE	1	AISI 304
11.	STEM WASHER	1	AISI 304
12.	STEM NUT	1	AISI 304
13.	PLASTIC COVER	1	PLASTIC
14.	LOCK DEVICE	1	AISI 304
15.	BOLT	4	AISI 304
16.	SPRING WASHER	4	AISI 304
17.	HEX NUT	4	AISI 304
18.	STOP PIN	1	AISI 304



SIZE	d	L	H	W	S	S1	X	BL	ISO M	5211 G	Cv Factor	Torque kgf-cm	kgs
1/4"	11.6	65	51	105	16.5	10.2	5	5/16"	36	M5	6.6	40	0.44
3/8"	12.7	65	51	105	16.5	10.2	5	5/16"	36	M5	7.9	40	0.43
1/2"	15	66	55	125	18.5	12.8	6.5	3/8"	36	M5	11.2	54	0.67
3/4"	20	81	60	125	20	13.5	6.5	3/8"	36	M5	21	78	0.88
1"	25	95	74	160	24	16	8	7/16"	42	M5	35	106	1.26
1 1/4"	32	109	80	160	24	16	8	7/16"	50	M6	57	150	2.04
1 1/2"	38	129	92	190	26	17	9	1/2"	50	M6	80	200	2.80
2"	50.8	150	101	190	26	17	9	1/2"	70	M8	150	280	4.29
2 1/2"	65	180	130	245	41	29.5	12	3/4"	70	M8	265	500	8.58
3"	80	206	142	245	41	29.5	12	3/4"	102	M10	415	770	14.15
4"	100	261	174	325	48	36.5	16	1"	102	M10	780	1100	25.18